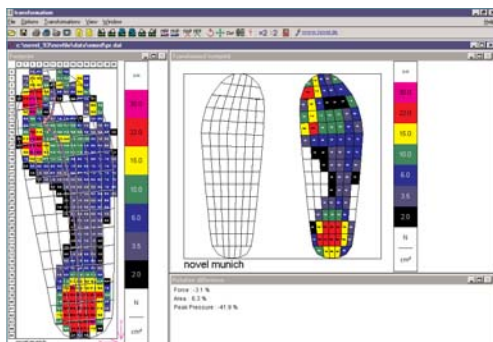


The tools package includes special programs for data reduction, data analysis and data transformation.

Programs included:

- centres
- force & area derivatives
- grady and factor of change
- differences and correlations
- value and file master
- intruders and regional threshold analysis
- transformation



transformation of emed platform data to pedar in-shoe system

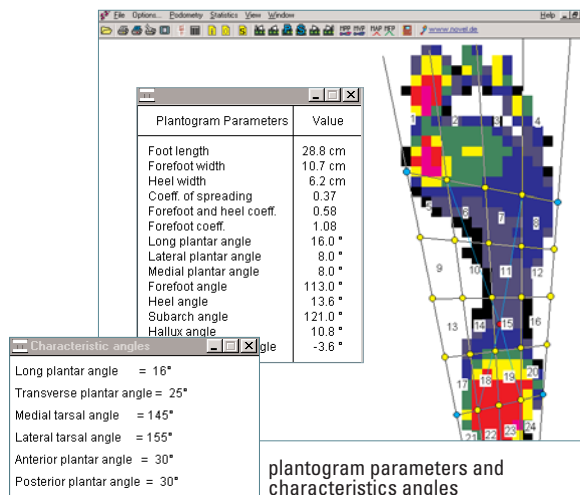
Features:

- calculates the coordinates of the center of pressure line and the maximum pressure line
- calculates force and area derivatives
- calculates pressure gradients
- calculates pressure difference between data files
- calculates the correlation function of force & area
- transforms emed platform measurements to systems with lower spatial resolution e.g. pedar insoles
- selects user defined sequences and user defined sensor areas of pressure measurement data
- corrects measurements due to artifacts

The geometry package includes programs for the analysis of the foot geometry.

Programs included:

- footco
- geometry
- podometry



plantogram parameters and characteristics angles

Features:

- calculates various plantogram parameters and characteristics angles

novel database and project software provide easy and convenient access to all foot analysis software.

novelgmbh (Germany) • Ismaninger Str. 51 • D-81675 Munich
 Tel: (+49) 89-41 77 67-0 • Fax: (+49) 89-41 77 67-99
 e-mail: novel@novel.de

novelelectronics inc. (USA) • 964 Grand Avenue • St. Paul, MN 55105
 Tel: (+1) 651-221 0505 • Fax: (+1) 651-221 0404
 e-mail: novelinc@novel.de

novelgmbh (Great Britain) • Tel/Fax: (+44) 20-8659 0959
 e-mail: noveluk@novel.de

www.novel.de

emed®, pedar®, pedograph®, pliance® and the Logo (colored foot)
 are registered trademarks of NOVELgmbh © 2004

information subject to change without notice

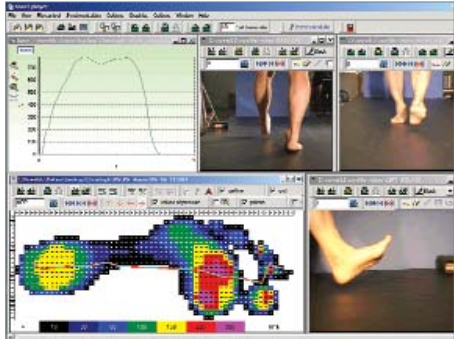


software_foot_eng_ver2_16/2/2004_ni

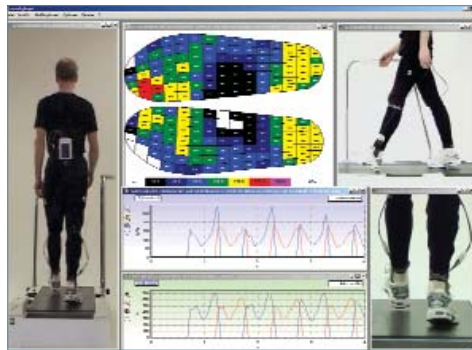


münchen • london • st. paul

The player software synchronises pressure measurement data obtained from emed, pedar and pliance systems with video and ASCII (e.g. EMG) files.



emed platform measurement data synchronised with 3 video files



pedar in-shoe measurement data synchronised with video files

Features:

- displays many video files and 1 ASCII file synchronised with pressure measurement data
- controls all dynamic analysis programs of novel
- produces an avi file of all synchronised dynamic events for media players
- overlays dynamic foot pressure analysis with digital videos

The multimask package includes programs for the regional analysis of pressure measurement data obtained with emed, pedar and pliance systems.

Programs included:

- navigator
- multimask and groupmask evaluation
- automask
- emascii
- average



groupmask evaluation of emed platform measurement data files

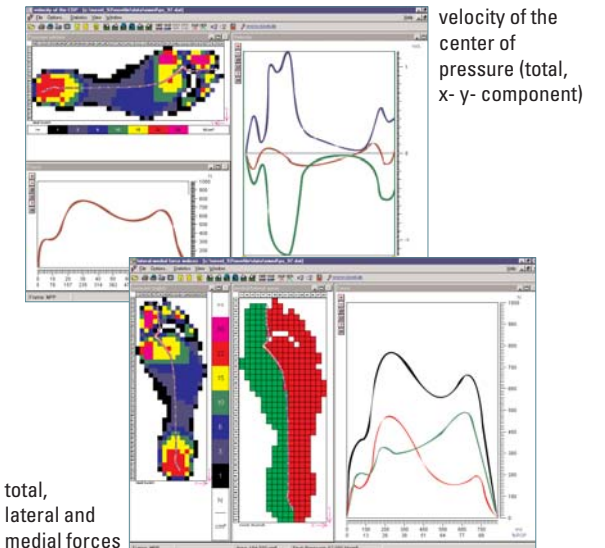
Features:

- applies masks automatically to anatomical foot regions with dection algorithm.
- applies defined masks of foot regions
- calculates various parameters across user defined foot regions
- calculates statistics for parameters such as mean, SD, 95% Conf. Interval
- exports results in ASCII format
- calculates the average of pressure measurement data files

The gaitline package includes programs for the analysis of the center of pressure line.

Programs included:

- lateral medial area & force indices
- velocity of the COP
- regional velocity of the COP
- axis



total, lateral and medial forces

velocity of the center of pressure (total, x- y- component)

Features:

- computes the time, speed and distance of the center of pressure for the total foot and four foot regions (heel, midfoot, forefoot and toes) separately
- calculates the velocity of the center of pressure in x- and y- components, separately
- calculates lateral/medial force and area indices and the corresponding derivatives