

Meeting Overview

Wednesday, 2nd August 2000

- 09.00 - 13.00 Munich by bike (optional)
Guided city tour, start at the Olympic Tower
- 13.00 - 18.00 **1st Registration at ★**
- 14.00 - 15.00 Seminar I: Physics of PDM
- 15.00 - 15.30 Coffee break
- 15.30 - 16.30 Seminar II: Application of PDM
- 16.30 - 16.45 Coffee break
- 16.45 - 17.45 Seminar III: Analysis of PDM
- 18.00 **Welcome Reception at novel**
2nd Registration & Art Exhibition & Music

Thursday, 3rd August 2000 ★

- 07.30 - 08.30 **3rd Registration & Breakfast**
- 08.30 - 10.30 **Scientific Presentations**
- 10.30 - 11.00 Coffee break
- 11.00 - 12.35 **Scientific Presentations**
- 12.35 - 14.00 Lunch
- 14.00 - 15.30 **Scientific Presentations**
- 15.45 - 16.15 Coffee break
- 16.00 - 17.40 **Scientific Presentations**
- 17.45 - 22.30 Beer Garden Walk

Friday, 4th August 2000 ★

- 08.30 - 10.10 **Scientific Presentations**
- 10.10 - 10.45 Coffee break
- 10.45 - 12.35 **Scientific Presentations**
- 12.35 - 14.00 Lunch
- 14.00 - 15.45 **Scientific Presentations**
- 15.45 - 16.15 Coffee break
- 16.15 - 18.00 **Scientific Presentations**
- 20.00 Free Get together / optional concerts

Saturday, 5th August 2000

- 07.30 **Outdoor day** departure by bus
- 08.30 - 16.00 Rafting on the Isar river
- 16.00 - 18.00 Coffee & Sports
- 19.30 **Banquet** at Seehaus (English Garden)
- Presentation of the novel award**

Sunday, 6th August 2000

- 10.00 - 16.00 **Orthopaedic Shoe Technology
meets Science - OSTWIS**

Monday, 7th August 2000

- 2 Day Mountainbike Tour through the Alps,
Austria and Bavaria (optional)

★ Location:

Großer Hörsaal, Klinikum Rechts der Isar, Ismaninger Str. 22

Specialty Day

Orthopaedic Shoe Technology Meets Science



New findings of the impact of shoes and inserts on the human body

Sunday 6th August 2000

Location: Großer Hörsaal

Klinikum Rechts der Isar, München

Organised by novel and the
Orthopädie Schuhtechnik Journal

- 10.00 - 10.15 Welcome
- 10.15 - 11.15 Keynote: *Benno Nigg*
Shoes and inserts - Myth and Reality
- 11.15 - 11.45 Coffee Break
- 11.45 - 12.05 Neuromuscular aspects of
joint stabilization
Wilfried Alt
- 12.05 - 12.45 Foot and Body Statics
Jean-René Bourdiol; J.-C. Heili
- 12.45 - 14.00 Lunch Break
- 14.00 - 14.45 Individual Motion Patterns
and the Appropriate Shoe Inserts
Benno Nigg
- 14.45 - 15.05 Coffee Break
- 15.05 - 15.45 1 Runner - 6 Orthopaedic
Shoemakers - 6 Solutions
- 15.45 - 16.15 Open Discussions
- 16.15 - 18.00 Modern Times
Shoes and Inserts from the Internet?
Live Demonstration of an Internet Wired
CAD/CAM System

novel_{gmbh} (Germany)

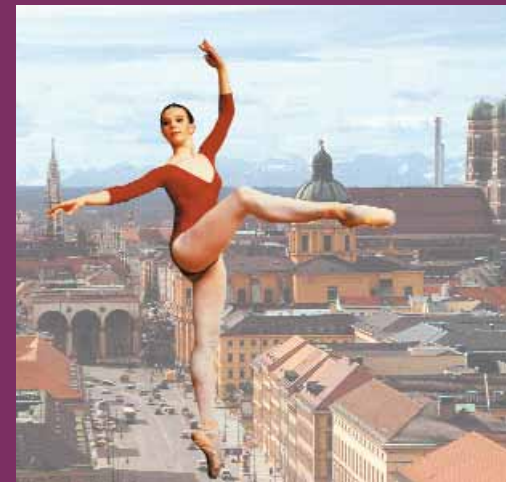
Ismaninger Str. 51 • 81675 Munich

Tel: (+49) (0) 89-417767-0 • Fax: (+49) (0) 89-417767-99

www.novel.de • novel@novel.de

emed scientific millennium meeting

Munich, Germany, 2nd to 6th August 2000



Preliminary Program
Scientific Presentations

Technical University Munich
Klinikum Rechts der Isar
Department of Plastic and
Reconstructive Surgery



for further details: www.novel.de

Presentations Schedule

Thursday 3. 8. 2000 ★

8.30 - 8.45 Welcome Address
Prof. Biemer

Biomechanics 1

8.45 - 9.30 Keynote: *E. Hennig*
The History of Pressure Distribution Technology

9.30 - 9.45 Plantar Pressure Distribution during Bipedal and Quadrupedal Walking in Chimpanzee
Pan Troglodytes
R.E. Wunderlich

9.45 - 10.00 Use of Static Radiographic Measurements to Predict Dynamic Plantar Pressures
T.G. McPoil

10.00 - 10.15 Visualisation of Pressure Dose: Synopsis of Peak Pressure, Mean Pressure, Loading Time and Pressure-Time-Integral
B. Drerup

10.15 - 10.30 Forces Acting in the Forefoot during Normal Gait
H.A.C. Jacob

10.30 - 11.00 **Coffee break**

Fractures

11.00 - 11.25 *novel award nomination*
Intraarticular Pressure Measurement in the Wrist Joint in Vivo

11.25 - 11.50 *novel award nomination*
Functional Recovery During Osteochondral and Bone Defect Healing

11.50 - 12.05 Dynamic Loading of the Lower Leg in Patients Mobilized with an Ilizarov-type External Fixator
L. Kleinhans

12.05 - 12.20 Peak Plantar Pressure During Ballet Movements: A Preliminary Study
A.C. Amadio

12.20 - 12.35 Evaluating Parameters of Internal Load from Pressure Distribution Measurements
K. Nicol

12.35 - 14.00 **Lunch**

Sports

14.00 - 14.45 Keynote: *M. LaFortune*
Research and Sport Product Innovation, Emphasis on Pressure Measurements

14.45 - 15.00 Carving Skis versus Traditional Skis - Changes in Pressure Distribution under the Foot
C. Raschner

15.00 - 15.15 Basic Stride Characteristics and Push-Off Techniques in In-Line Speed Skating
O. Hoos

15.15 - 15.30 Biomechanical Aspects of the Optimal Push-Off Techniques and the Effects of Arm Swing on its Quality in Single Dance Skating Technique
S. Lindinger

15.30 - 15.45 The Correlation Between Plantar Pressure and Barbell's Kinematics in Snatch
Y.C. Liou

15.45 - 16.15 **Coffee Break**

Biomechanics 2

16.15 - 16.40 *novel award nomination*
A Randomized Controlled Trial of Foot Orthoses in Rheumatoid Arthritis: 18-Month Plantar Pressure Data

16.40 - 16.55 The Use of Pressure Measurements to Determine the Effect of Shoe Orthotics on Knee Joint Moments
B.M. Nigg

16.55 - 17.10 Analysis of the Center of Pressure Gait Line and its Relationship to Rearfoot Motion
M.W. Cornwall

17.10 - 17.25 New Podometric Variables for the Quantitative Description of the Support Phase of the Foot to Distinguish Between Physiological and Pathological Movement Patterns
W. Bäurle

17.25 - 17.40 Breast Bounce, Brassiere Straps and Conducting Polymers: A Novel Approach to Assessing Dynamic Loading
J. Steele

Friday 4. 8. 2000 ★

Biomechanics 3

8.30 - 9.15 Keynote: *P. Brüggemann, M. Morlock*
The Use of Pressure Distribution Measurements for the Assessment of Workplace Loading

9.15 - 9.30 Can Feet be Recognized from PDM?
A. Kalpen

9.30 - 9.55 *novel award nomination*
Plantar Pressure Changes Following Sensory Attenuation in Human Subjects

9.55 - 10.10 Cooling the Sole of the Foot Leads to Increased Postural Sway and Modified Pressure Distribution Patterns
E. Eils

10.10 - 10.45 **Coffee Break**

Diabetes 1

10.45 - 11.30 Keynote: *P. Cavanagh*
The Biomechanics of the Diabetic Foot

11.30 - 11.55 *novel award nomination*
Structural and Functional Predictors of Higher Plantar Pressures in the Diabetic Foot

11.55 - 12.20 *novel award nomination*
Assessing and Treating High Plantar Pressure and Callus in Young People with Diabetes

12.20 - 12.35 The Effect of Callus Removal on Plantar Pressures in Subjects with and without
J. Potter

12.35 - 12.50 A Study of the Factors Influencing the Occurrence of High Pressure between the Foot and the Sole of Footwear
P. Hlavacek

12.50 - 14.00 **Lunch**

Diabetes 2

14.00 - 14.15 Two Years of Study of Diabetes Patients with Amputations
T. Tsvetkova

14.15 - 14.30 Quantifying Load Transfer in Therapeutic Insoles
P. Cavanagh

14.30 - 14.45 The Neuropool Project - The Creation of an Extensive Database on Diabetic Feet; A Short Interim Report
T. de Lange

Deformities

14.45 - 15.00 Barefoot and In-Shoe Pressure Measurements after Surgical Treatment of Foot Tumours
D. Rosenbaum

15.00 - 15.15 Can Comparative Gait Analysis of a Healthy Normal Population versus a Group of Patients after Kramer's Osteotomy be Used to Draw Conclusions about the Pathogenesis of Hallux Valgus?
P. Diekstall

15.15 - 15.30 Foot Pressure Changes after Flatfoot Surgery
E. Toullec

15.30 - 15.45 Plantar Pressure Measurements after Grice Green Subtalar Extraarticular Arthrodesis for Treatment of Pediatric Pes Planovalgus
C. Bertsch

15.45 - 16.15 **Coffee Break**

16.15 - 17.30 Short Presentations & Discussions
B.M. Nigg

17.30 - 17.50 The Reliability of Science
Closing Remarks
Peter Seitz

★ Location:

Großer Hörsaal, Klinikum Rechts der Isar, Ismaninger Str. 22